

46/2

NOTES

1. THERE SHALL BE NO TREES, SHRUBS OR STRUCTURES BUILT OR PLACED ON UTILITY AND/OR DRAINAGE EASEMENTS.
2. BUILDING SETBACK LINES SHALL BE AS REQUIRED BY PALM BEACH COUNTY ZONING REGULATIONS.
3. U.E. DENOTES UTILITY EASEMENT
D.E. DENOTES DRAINAGE EASEMENT
I. & E., U. & D.E. DENOTES INGRESS AND EGRESS, UTILITY AND DRAINAGE EASE.
4. EASEMENTS ARE FOR PUBLIC UTILITIES UNLESS OTHERWISE NOTED.
5. PERMANENT REFERENCE MONUMENTS ARE SHOWN THUS: PERMANENT CONTROL POINTS ARE SHOWN THUS:
6. BEARINGS AS SHOWN HEREON ARE BASED ON THE EAST LINE OF SECTION 12, TOWNSHIP 45 SOUTH, RANGE 42 EAST, PALM BEACH COUNTY, FLORIDA, BEING AN ASSUMED BEARING OF SOUTH 02°02'59" WEST, AND ALL OTHER BEARINGS ARE RELATIVE THERETO.
7. APPROVAL OF LANDSCAPING ON UTILITY EASEMENTS OTHER THAN WATER OR SEWER SHALL BE ONLY WITH THE APPROVAL OF ALL OCCUPYING SAME.
8. IN INSTANCES WHERE DRAINAGE AND UTILITY EASEMENTS INTERSECT, THE AREAS WITHIN THE INTERSECTION ARE DRAINAGE AND UTILITY EASEMENTS. CONSTRUCTION AND MAINTENANCE OF UTILITY FACILITIES SHALL NOT INTERFERE WITH THE DRAINAGE FACILITIES WITHIN THESE AREAS.

PLAT NO. 1
MANOR FOREST
 A P.U.D.

DECEMBER 1982

SHEET 2 OF 2

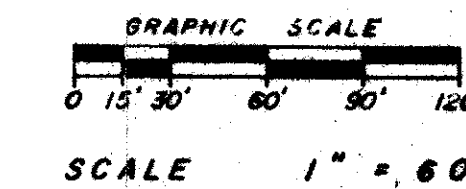
2

STATE OF FLORIDA
 COUNTY OF PALM BEACH
 This Plat was filed for record at
 M. this day of 19
 and duly recorded in Plat Book No.
 on Page
 John B. Dunlap, Clerk Circuit Court
 By: _____ D.C.

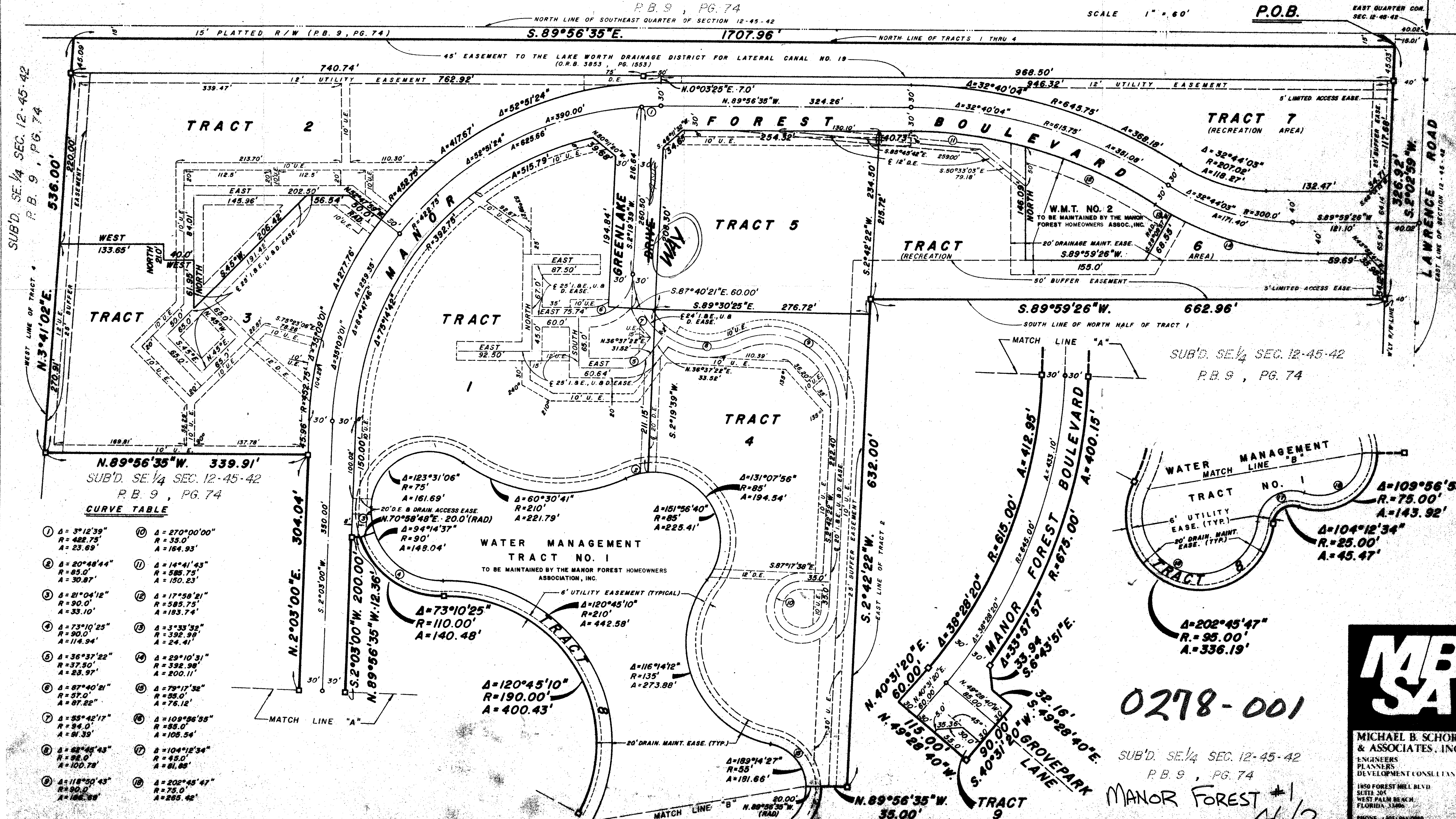
SUB'D. NE 1/4 SEC. 12-45-42

P.B. 9, PG. 74

NORTH LINE OF SOUTHEAST QUARTER OF SECTION 12-45-42



P.O.B.



N. 89°56'35"W. 339.91'
 SUB'D. SE 1/4 SEC. 12-45-42
 P.B. 9, PG. 74

CURVE TABLE

1 Δ = 3°12'39"	10 Δ = 270°00'00"
R = 422.75'	R = 35.0'
A = 23.69'	A = 164.93'
2 Δ = 20°48'44"	11 Δ = 14°41'43"
R = 85.0'	R = 585.75'
A = 30.87'	A = 150.23'
3 Δ = 21°04'12"	12 Δ = 17°58'21"
R = 90.0'	R = 585.75'
A = 33.10'	A = 193.74'
4 Δ = 73°10'25"	13 Δ = 3°33'32"
R = 90.0'	R = 392.98'
A = 114.94'	A = 24.41'
5 Δ = 36°37'22"	14 Δ = 29°10'31"
R = 37.30'	R = 332.98'
A = 23.97'	A = 200.11'
6 Δ = 87°40'21"	15 Δ = 79°17'32"
R = 57.0'	R = 55.0'
A = 87.22'	A = 76.12'
7 Δ = 53°42'17"	16 Δ = 109°56'55"
R = 94.0'	R = 85.0'
A = 81.39'	A = 108.54'
8 Δ = 52°45'43"	17 Δ = 104°12'34"
R = 98.0'	R = 45.0'
A = 100.78'	A = 61.88'
9 Δ = 118°50'43"	18 Δ = 202°45'47"
R = 90.0'	R = 75.0'
A = 188.58'	A = 266.42'

0278-001

SUB'D. SE 1/4 SEC. 12-45-42
 P.B. 9, PG. 74

MANOR FOREST #1
 46/2

MICHAEL B. SCHORAH & ASSOCIATES, INC.
 ENGINEERS
 PLANNERS
 DEVELOPMENT CONSULTANTS
 1850 FOREST HILL BLVD.
 SUITE 201
 WEST PALM BEACH
 FLORIDA 33406
 PHONE: 1-305-990-0000